

The background of the entire image is an aerial photograph of New York City, specifically the area around Lower Manhattan. A semi-transparent, light blue overlay is applied to the image, representing a projected sea level rise. This overlay shows the city's buildings and streets partially submerged in water, with the water level reaching up to the lower floors of many skyscrapers. The overlay is most prominent in the foreground and middle ground, fading out towards the horizon. The text "MEGALOPOLIS FACING SEA LEVEL RISE" is overlaid on the bottom left of the image, with "MEGALOPOLIS" and "FACING" in white and "SEA LEVEL RISE" in blue. A yellow rounded rectangle in the bottom right corner contains the text "52' & 90'".

MEGALOPOLIS FACING SEA LEVEL RISE

52' & 90'



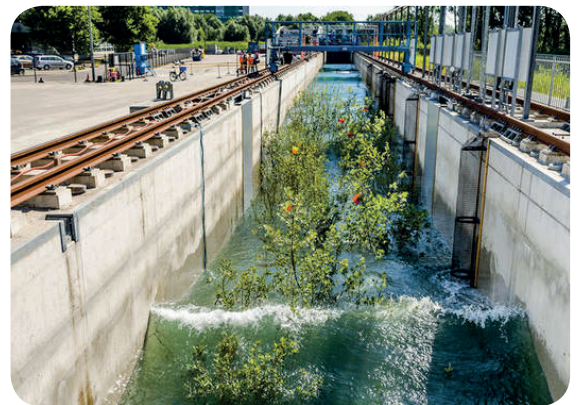
Today, twenty-two megacities around the world are home to more than ten million people - and fifteen of them are located by the sea!

Hurricanes, storms, tempests and floods - but also quieter but equally devastating threats such as salt or erosion are affecting coastal megacities which are now up against the wall.

We have chosen three emblematic cities on three different continents: New York, Rotterdam and Singapore. Cities that each face unique problems and must revisit their relationship with water in order to survive on the long run. In 50 years, all surge barriers in the world will be out of order. The best experts are engaged in a real race against time with the elements.

Will it be necessary to close New York's bay? Or the Northern sea to protect the Atlantic coast? What solutions will then remain for coastal cities? Would moving on water be the solution?

DELIVERY FALL 2021



Producers and Broadcasters:

**Tangerine Productions, France Télévisions,
Composite Films, M'go Films**

Director: **Laurence Thiriat**

WWW.TERRANOA.COM
155 rue de Charonne - 75011 Paris - FRANCE
contact@terranoa.com

52' & 90'