



# NATURAL DISASTERS

---

## MEGA REGULATORS



52' & 90'

## SYNOPSIS

**Natural disasters never come alone or by accident!**

Discover the latest in Earth sciences revealing how these disruptive phenomena interact on a global scale as mega regulators of Earth's survival. For the first time researchers are decoding the global mechanics affecting our climate establishing links between a cyclone and an earthquake, a volcanic eruption and a sea current. We're uncovering the secrets of a suffering Planet which benefits from such upheavals and recreates itself as it gets destroyed, struggling to find it's new balance.

The narration is carried out by a panel of leading American, Asian and European experts as they reveal to us the fascinating relations between the history of the planet, the history of cataclysms and the history of men. Riveting 2D et 3D modeling will bring viewers at the heart of Natures phenomenal forces.

*A co-production:* **Cocottes Minute Productions, France 5**

*Director & Author:* **Christine Tournade**

*Co-Author :* **Bernard Mathieu (novelist & journalist)**

*Co-Developped by:* **Estelle Raffin (in charge of scientific film development at Cocottesminute productions)**

*Scientific advisor:* **Claude Jaupart (former director of the Institut de Physique du Globe in Paris)**

**52' & 90'**



Pinatubo Volcano Eruption

## PRODUCTION SCHEDULE

**Shot in USA, Canada, Chili, Taiwan, Japan, France, Portugal Spain, Sicily, Germany, Iceland**

May - November 2019: Research and Scriptwriting

2020 - Shooting and editing

First Quarter 2021 - Delivery

**BUDGET: 670.000 euros**

**GAP: 237.000 euros**

**Delivery MAY 2021**



• **Claude Jaupart - Scientific Advisor (France)**

Renowned geophysicist specialised in Earth Sciences, Member of the Science Academy he directed Institut Physique du Globe in Paris. He was awarded the Honorary Harry H. Hess Medal (2015) for his contribution in vulcanology, magma physics and geological fluid dynamics which extended our understanding of the evolution of Continents and heat flows shaping Earth. he is a regular contributor in the Media to raise awareness on seismic risks and other natural disasters risk management.



• **Duane Waliser - Chief Scientist - Jet Propulsion Laboratory/ NASA (USA)**

Research on flood events linked to atmospheric rivers

• **Max van Wyk de Vries - Volcanologist - Minesota University (Scotland/ USA)**

Revealed that Antarctica's vast ice sheet conceals almost 100 newly discovered volcanoes.



• **Philippe Steer - Geophysicist - National Geosciences Institute/ CNRS (France)**

Seismic and flood phenomena Research

• **Kyoji Sassa - International Consortium on Landslides - Kyoto University (Japan)**

European Geosciences Union Medal - Outstanding scientific contributions in fundamental research in landslide hazards and in landslide risk-reduction initiatives

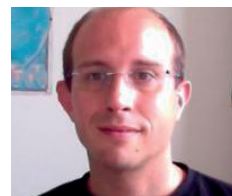


• **Daniel Garcia-Castellanos - Institute of Earth Sciences Jaume Almera (Spain)**

Catastrophic flood of the Mediterranean after the Messinian salinity crisis (around 6 billion years ago)

• **Didier Swingedouw - Physical oceanography/ Paleoclimate - CNRS ( France)**

Volcano eruption impacts on oceanographic flows



• **James Carlton - Professor of Marine Sciences - Williams College (USA)**

Non-indigenous bio-invasion research

• **TAIWAN - Island of the 30.000 earthquakes:** Yih-Min Wu, Sophie Laplace, Lin & Wei-Sen Li Professors  
Typhoon & seismic impacts research center



## COCOTTES MINUTE PRODUCTIONS

We created nearly 20 years ago a steaming hub of innovative authors and directors who challenge viewers and question the world around us. In 2014 the Prize for best Documentary TV producer of the year (PROCIREP) confirmed the importance of nourishing our slate of projects from intensive research and development stage, to skillful and innovative scriptwriting work to secure the best narrative on each of our films. We work with national and international partners. Recent productions include (Homo Spatius, Interpol under Influence).

## DIRECTOR - Christine TOURNADE

Christine Tournarde spent half her career working abroad in all fields of TV and Cinema as a freelance researcher, director, producer (New-York, Bogota, Moscow, Scotland, Jakarta).

Among her recent works :

- *"The Lost Eden"* (Mona Lisa production for ARTE)
- the award-winning *"Serge Sentenced to Death"* (for France 3, winner of FIGRA Grand Prize 2018).

## INTHEBOX

A 3D, FX animation studio working for Advertising and Television on animation, and factual content - Silver Dragon Award/ Shenzhen 2014 for LIFE ON US (ARTE, SBS, Mona Lisa and Simon & Nasht Prod)

<http://www.inthebox.pro/>



52' & 90'